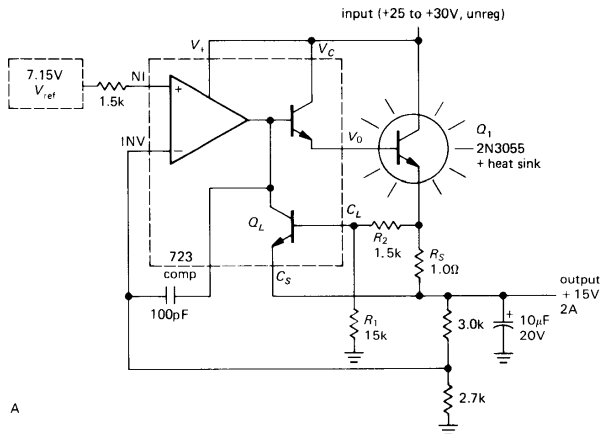


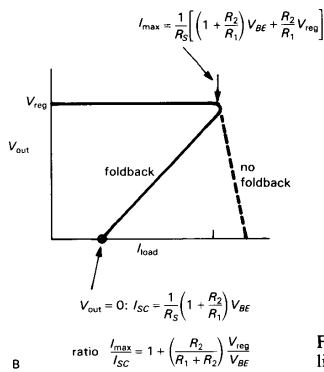
EE 322 Analog Electronics, Spring 2011

Exam 1 March 2, 2011

help sheet



A



B

Figure 6.7. A. Power regulator with foldback current limiting. B. Output voltage versus load current.

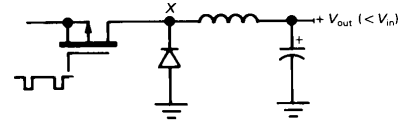


Figure 6.40. Step-down switch.

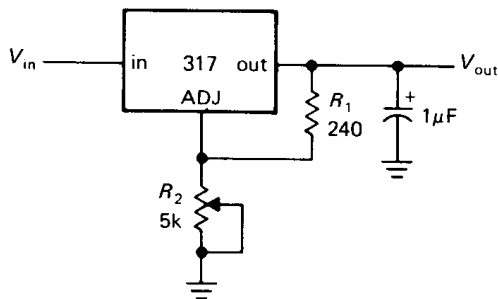
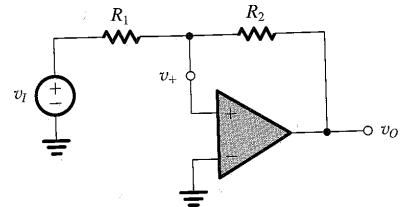
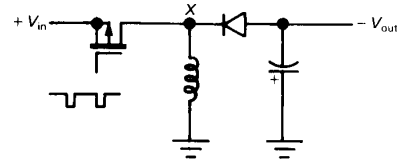
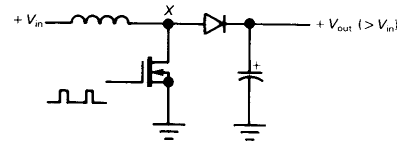


Figure 6.29. Three-terminal adjustable regulator.

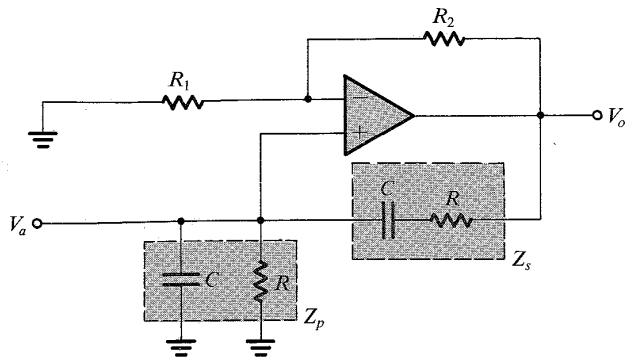


FIGURE 13.4 A Wien-bridge oscillator without amplitude stabilization.

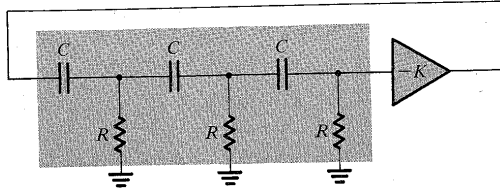


FIGURE 13.7 A phase-shift oscillator.

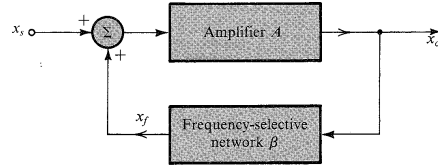


FIGURE 13.1 The basic structure of a sinusoidal oscillator. A positive-feedback loop is formed by an amplifier and a frequency-selective network. In an actual oscillator circuit, no input signal will be present; here an input signal x_i is employed to help explain the principle of operation.