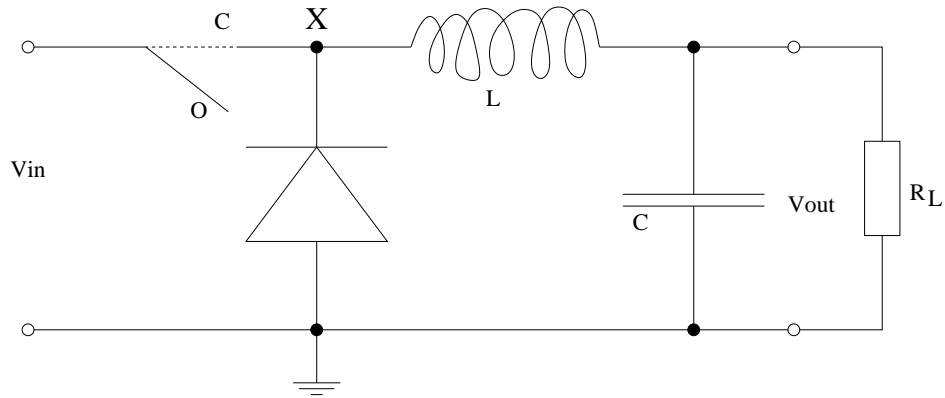


EE 322 Advanced Analog Electronics, Spring 2013

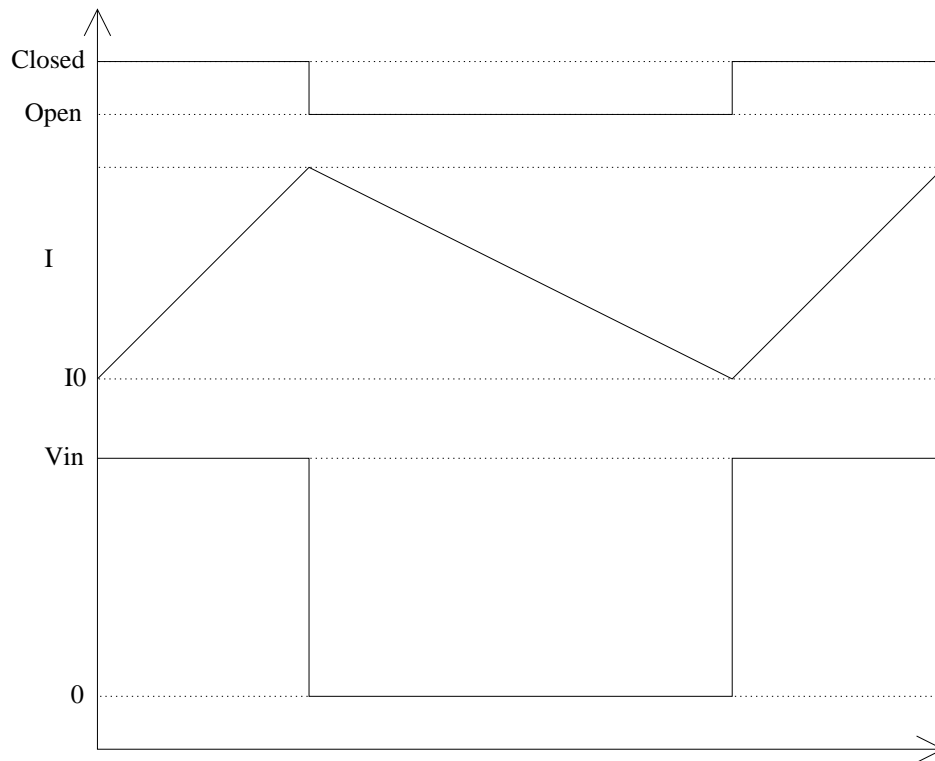
Handout 2

The Step-Down regulator in discontinuous mode.

The Step-down switching regulator looks like this:



We will first plot the inductor current and voltage V_X for continuous operation. Here it is



Next, we will plot the inductor current and voltage V_X for discontinuous operation. Here it is

