

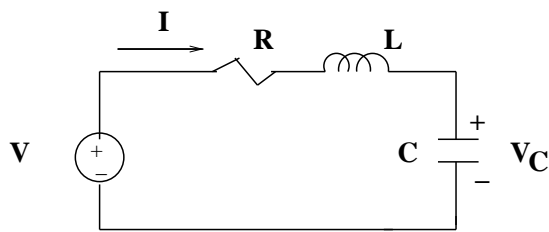
EE 341 - Homework 3

Due Feb. 10, 2012

1. For the series RLC circuit shown in the figure below, Assuming $v(t) = V \cos \omega_r t$, where ω_r is the resonant frequency.

- Determine the expression for the energy stored in the capacitor $W_C(t)$
- Determine the expression for the energy stored in the inductor $W_L(t)$
- Determine the energy lost in a period $P_R T$
- Show (without using duality) that the Quality factor is given by

$$Q = \frac{\omega_r L}{R}$$



- Problem 10.45
- Problem 10.50
- Problem 10.52